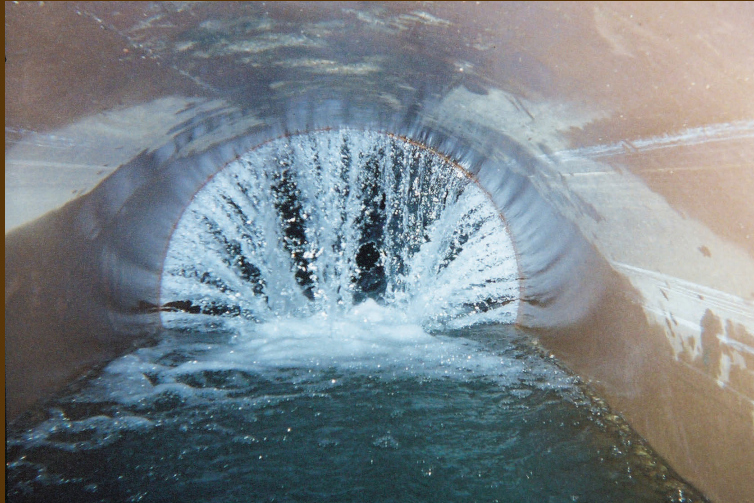


ELIMINATE INFILTRATION



PERMANENTLY SEAL LEAKING *PIPE JOINTS* and *LATERAL CONNECTIONS* WITH **CHEMICAL GROUT**

- Originally developed nearly fifty years ago, chemical grouting is the oldest method for impeding ground water infiltration into structurally sound sewer systems.
- Grout is easily injected through leaking joints and lateral connections, sealing the leak and essentially providing a "new" gasket. Installations are completed per ASTM F-2304.
- During the process, chemical grout is pumped into the soil around the joint, stabilizing and forming a collar around the pipe. **Ground water flow into the sewer is eliminated** and sewerage is kept within the system.

Here is what some of our Chemical Grout customers have to say about the system:

"Grouting is a quick, easy and economical way for us to stop I&I in our collection system. We've been using it for years with great results."

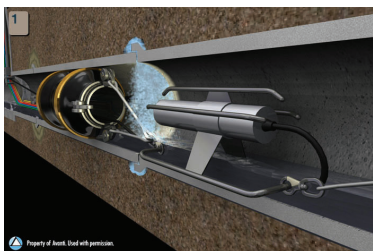
--- Mike, Wastewater Superintendent

"When our crew locates a pipe with leaking joints, we contact Visu-Sewer. They seal the joints, stop the leaks and do it without excavation or any bypassing"

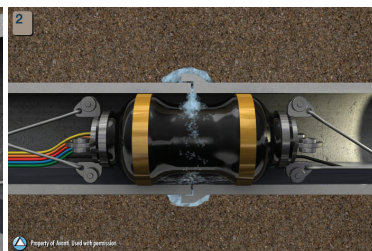
--- Terry, Collection Systems Manager

"We found a joint that was leaking over 20 gallon per minute. Chemical Grout did the trick, leak gone and Visu's crew was great"

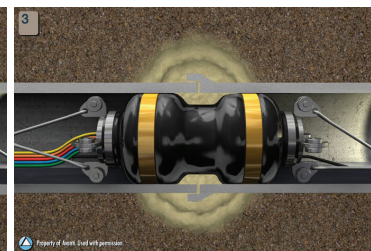
--- Randy, Utility Manager



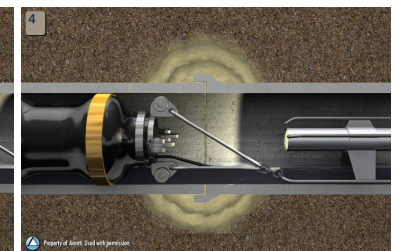
1
Locate leak



2
Inflate packer over leak



3
Inject grout into soil



4
Air test & deflate packer

 **Visu-Sewer**
Inspect. Maintain. Rehabilitate.

