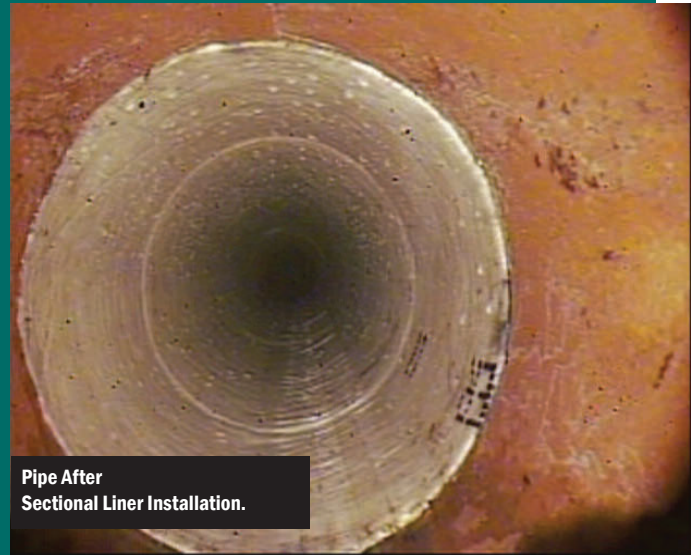


REPAIR BROKEN PIPE



Pipe Before
Sectional Liner Installation.



Pipe After
Sectional Liner Installation.

WITH THE SECTIONAL LINER SYSTEM

The Sectional Liner system is a very economical method to **completely restore the structural integrity of sewer pipe.** It eliminates disruptive excavation repairs through the use of proven trenchless Cured in Place Pipe technology.

Liners are installed through existing manholes and are available in 2-8' lengths for pipe sizes 8-24" diameter. They are made of polyester felt tubes which are saturated with high quality epoxy resins to provide exceptional strength and water tight fit. The thickness of the liner is designed in accordance with ASTM F-1216.

A typical installation takes about 4 hours to complete and lateral connections may be restored internally via robotic cutters.

Here is what some of our Sectional Liner customers have to say about the system:

"Sectional Liners allow us to quickly repair our pipes without the disruption associated with open cut excavations"

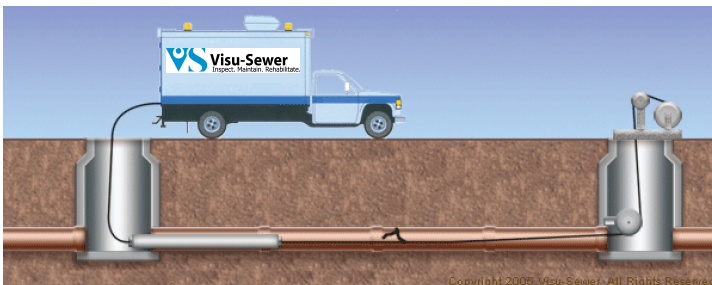
--- John, Project Engineer

"We've been using Sectional Liners since 1999. They are the perfect "patch" to fix isolated defects in otherwise good sewers"

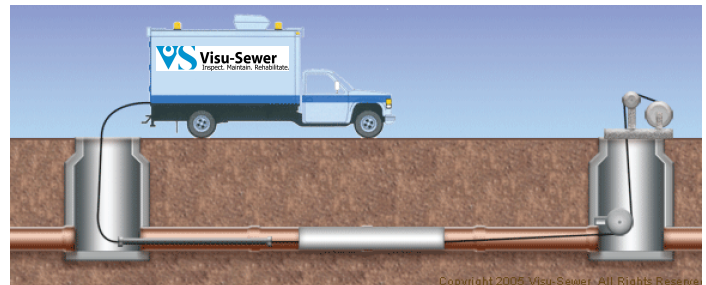
--- Kevin, Utility Superintendent

"When we run into a small section of broken pipe, we call Visu-Sewer to make the repair. They're crews are great and the repair costs about 75% less than digging"

--- Al, Superintendent of Sewers



Pipe is cleaned, inspected and liner is ready to install.



Liner is positioned over the defect and cured in place

National  Liner®

 **Visu-Sewer**
Inspect. Maintain. Rehabilitate.

